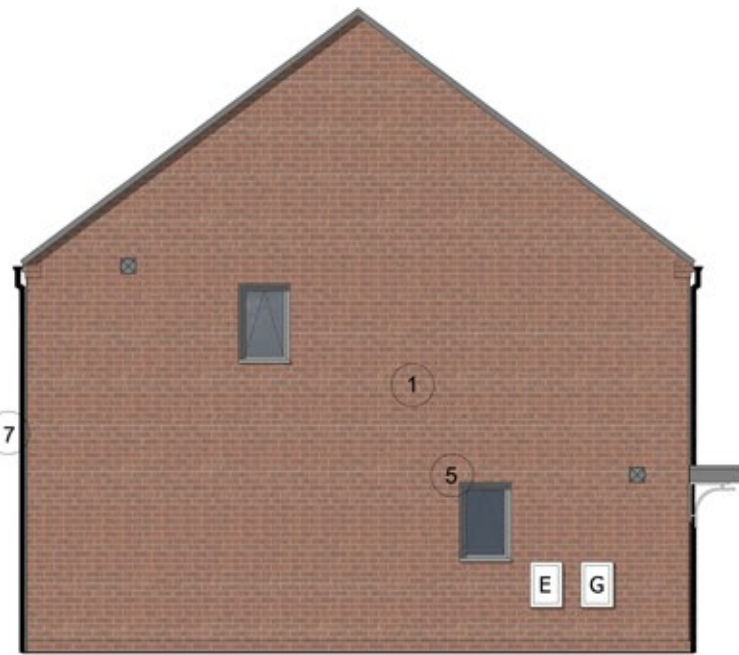




FRONT ELEVATION



SIDE ELEVATION



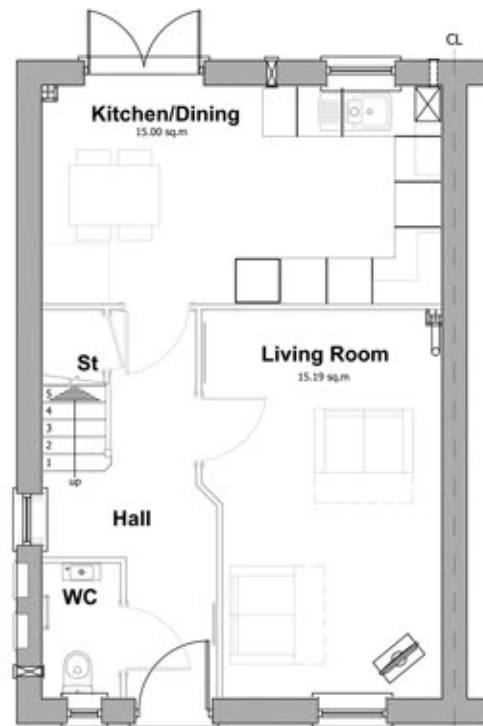
REAR ELEVATION



FRONT ELEVATION  
Brick & Render Option

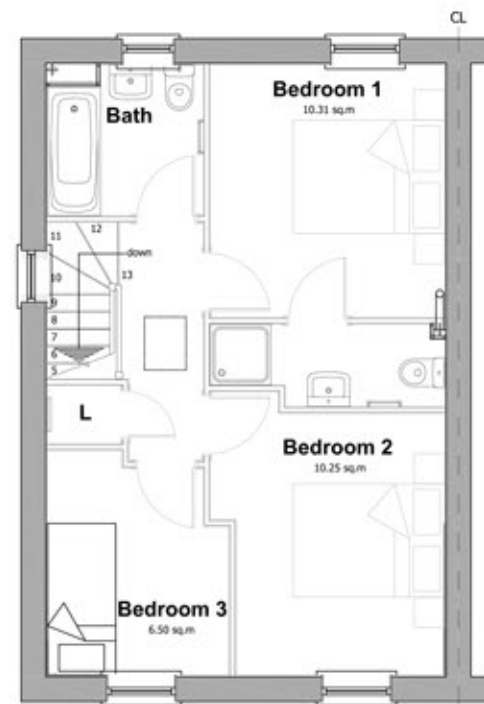
Materials Schedule

- 1 Walls: Abbeydale Red Multi Brick
- 2 Walls: Smoked Yellow Multi Brick
- 3 Walls: Render
- 4 Roof and Canopy: Dark Grey Roof Tiles
- 5 Windows: Signal Grey Upvc
- 6 Fascia Board: Black Upvc
- 7 Rainwater Goods: Black Upvc
- 8 Door: Type and Colour Based on Materials Layout



GROUND FLOOR

FLOOR AREA: 34.52m<sup>2</sup> (33.89m<sup>2</sup>)  
TOTAL FLOOR AREA: 69.04m<sup>2</sup> (67.78m<sup>2</sup>)



FIRST FLOOR

FLOOR AREA: 34.52m<sup>2</sup> (33.89m<sup>2</sup>)



FRONT ELEVATION  
Render Option

SIDE ELEVATION

PLANNING

Notes
- Copyright in this drawing remains the property of BM3 Architecture Limited.
- Do not scale this drawing. Work to figured dimensions only.
- Contractors and consultants are to advise BM3 Architecture Limited of any discrepancies.

Revision	Date	By	Chkd
A Materials Schedule Added. Brick projection added to render finish.	17.03.20	BR	PS
B Material Schedule updated. Fascia Colour changed to Black.	20.05.20	BR	PS
C Material Schedule updated. Eaves Lifted by 150mm. Brick Option added.	28.07.20	BR	PS

Project	Scale	Dated	Job No.
SOUTHWATER WAY TELFORD	1:100@A3	04.03.2020	71167

Drawing	Client
WESTWOOD 3 BED 5 PERSON	LOVELL

Drawing No.	Drawn by	Checked	C/SfB Element	Revision
D14	BR	PS	PLANNING	C

